

# Company and Stock Information

## Head Office

Toyosu Center Bldg., 3-3, Toyosu 3-chome,  
Koto-ku, Tokyo 135-6033, Japan  
Telephone: +81-3-5546-8202

## Date of Establishment

May 23, 1988

## Common Stock

¥142,520 million

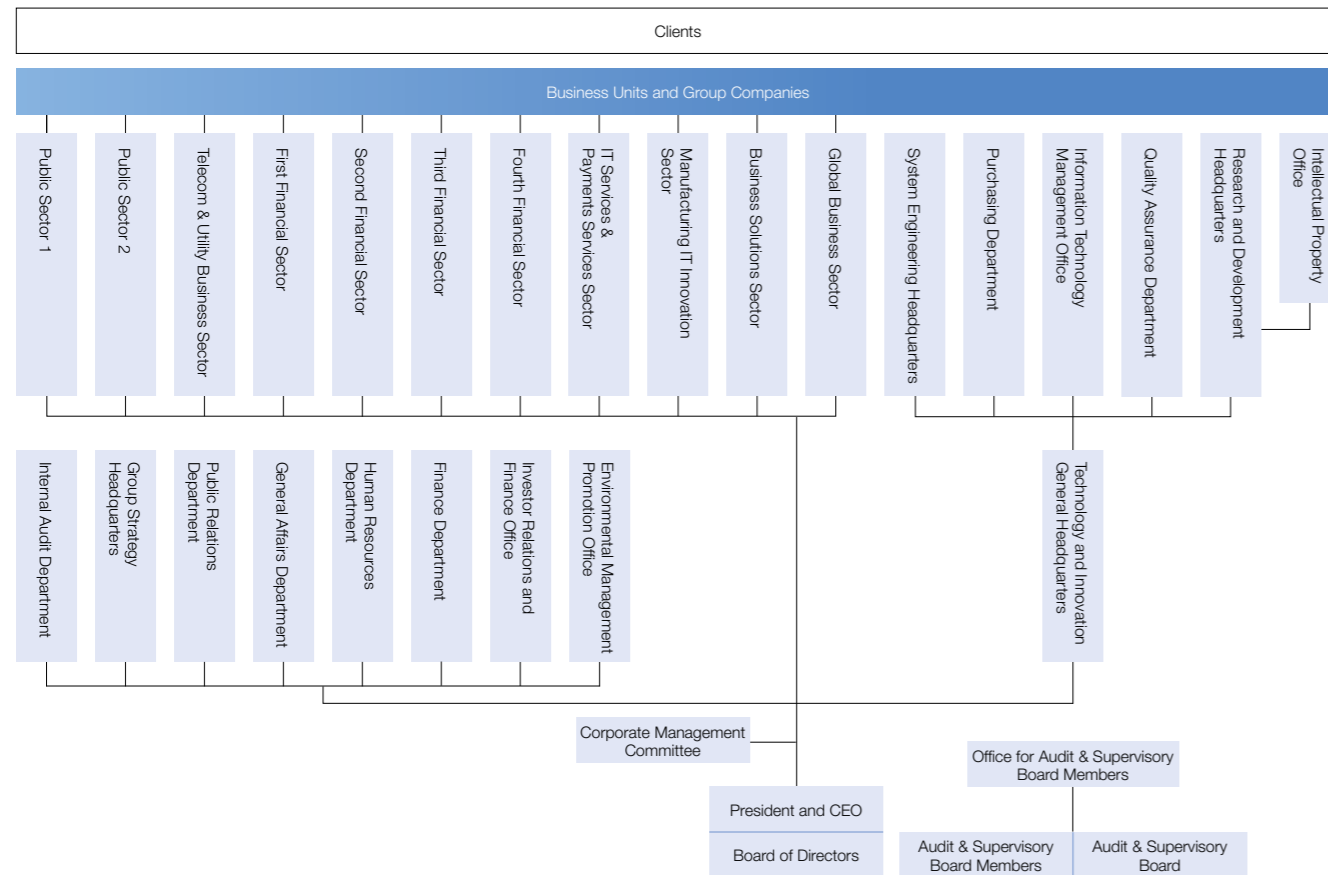
## Fiscal Year

April 1 to March 31 of the following year

## Independent Auditors

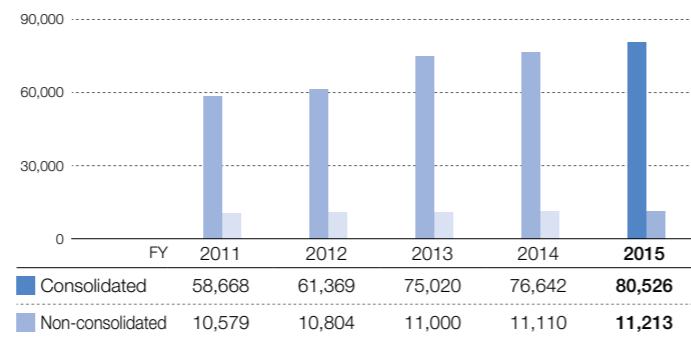
KPMG AZSA LLC

## Organizational Structure (As of July 1, 2016)



## Number of Employees at Fiscal Year-End

(People)



Note: Employees seconded from NTT DATA to other companies are not included, but employees seconded to NTT DATA are included in the number of employees.

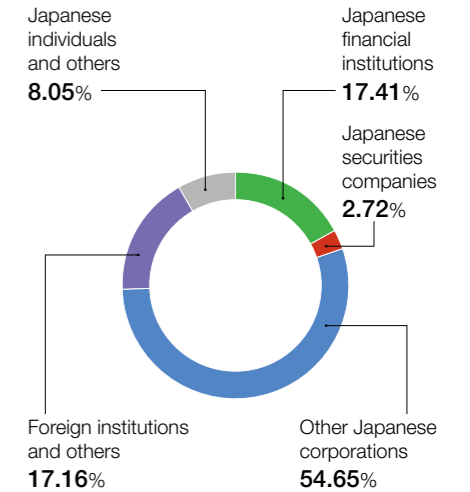
## Number of Shares Issued and Number of Shareholders

Total Number of Shares Authorized to be Issued by the Company	1,122,000,000 shares
Total Number of Shares Issued	280,500,000 shares
Number of Share Units	100 shares
Number of Shareholders	78,828 persons

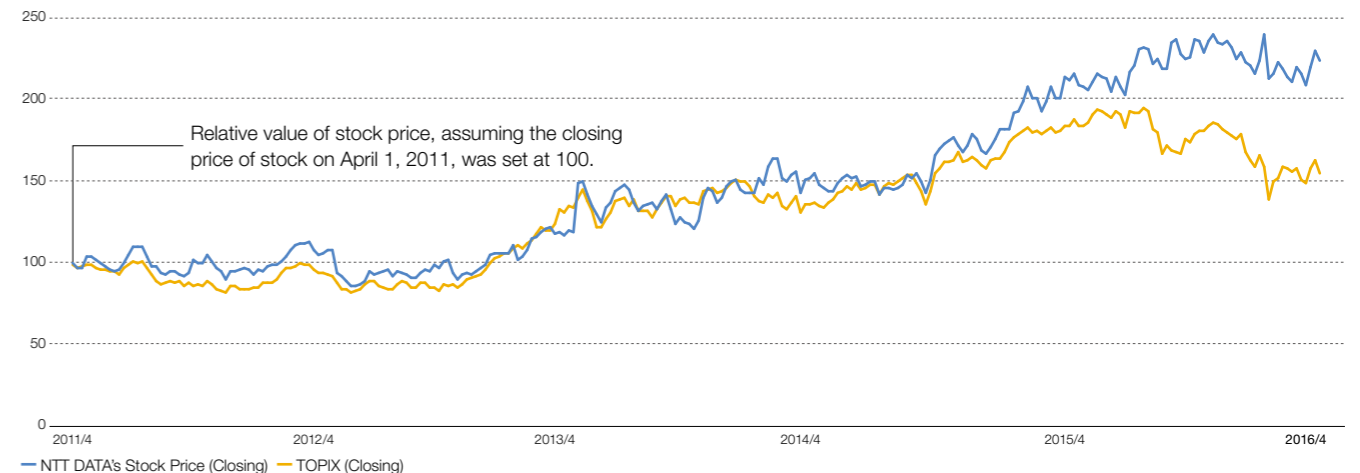
## Principal Shareholders

Name	Number of Shares Held	Ratio of Shareholding (%)
NIPPON TELEGRAPH AND TELEPHONE CORPORATION	152,001,000	54.19
The Master Trust Bank of Japan, Ltd. (Trust Account)	18,284,000	6.52
Japan Trustee Services Bank, Ltd. (Trust Account)	11,968,400	4.27
Trust & Custody Services Bank, Ltd. (Investment Trust Account)	3,177,100	1.13
STATE STREET BANK AND TRUST COMPANY 505001 (Standing agent: Mizuho Bank, Ltd.)	2,824,515	1.01
NTT DATA Employee Share-Holding Association	2,824,200	1.01
BNP PARIBAS SECURITIES (JAPAN) LIMITED	2,388,400	0.85
NORTHERN TRUST CO. (AVFC) RE U.S. TAX EXEMPTED PENSION FUNDS (Standing agent: The Hongkong and Shanghai Banking Corporation Limited Tokyo Branch)	2,382,500	0.85
Goldman Sachs Japan Co., Ltd.	1,951,200	0.70
THE BANK OF NEW YORK MELLON SA/NV 10 (Standing agent: The Bank of Tokyo-Mitsubishi UFJ, Ltd.)	1,872,984	0.67

## Distribution of Ownership Among Shareholders



## Stock Price Chart



\* We implemented a 1:100 stock split with an effective date of October 1, 2013. Figures for the previous period have been calculated on the assumption that this stock split was conducted.

## Third-Party Evaluations (As of March 2016)

NTT DATA receives evaluations from research organizations in Japan and overseas.

